

Earth to Business

the ERDAS E-Newsletter

www.erdas.com

ERDAS INSIGHTS



ERDAS Announces New President

ERDAS is pleased to announce that industry veteran Joel Campbell has joined the management team as the new company President.

Mr. Campbell is well known and highly regarded throughout the geospatial industry, where he has been a featured speaker, lecturer and trainer for many

organizations around the world. He has over 20 years of experience in the geospatial industry, in a variety of senior roles including sales, business development and product management. His previous employers include GeoEye, Definiens, EarthData and ESRI, along with operating his own consulting firm.

Most recently, Campbell was the Senior Director of Product Management for GeoEye, where he helped manage the company's expansion into new commercial markets and supported products from the recently launched GeoEye-1 earth imaging satellite. During more than a decade with ESRI, he held chief leadership and management positions in the U.S. sales operation. These included Director of U.S. Sales, supervising regional offices and several hundred staff members, as well as expanding the company's presence in the Washington D.C. area.

FEATURED WHITE PAPER

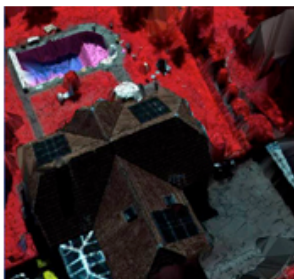
Image Exploitation for the Enterprise

Growing standards, increased bandwidth, service oriented architecture and affordable multiprocessing are changing the way that we work. Isolated desktop systems will be augmented with federated clusters of systems which can be located in the same building or distributed across the world. Collaborative capabilities will enable users to consume and share geospatial data and services with the producers of GIS data, improving the decision making process. [Read More](#)

TECHNOLOGY PREVIEW

New Terrain Processing Solution

ERDAS announces LPS eATE, a new module for generating high-resolution terrain information from stereo imagery. The LPS eATE technology preview provides a sample of the new ERDAS terrain processing solution. LPS eATE will be formally released later this



Webinars

19 January 2010

Presenting a New Face to the World - IMAGINE the Difference (ERDAS IMAGINE 2010)

02 February 2010

Prove It: Can ERDAS Really Deliver TBs of Imagery Faster than the Competition?

New Archived Webinars Available:

Increase the Quality & Fidelity of Your Radar Data

[Click here to view all our Archived Webinars!](#)

Training

Did you know that ERDAS offers training in Australia & New Zealand, Belgium and in the USA? For more information, e-mail training@erdas.com.

Belgium:

January 26-27: **What's New in ERDAS IMAGINE 2010** (Liege, BE)

February 22-24: **Fundamentals of ERDAS IMAGINE I** (Liege, BE)

February 25-26: **Fundamentals of ERDAS IMAGINE II** (Liege, BE)

Denver, Colorado, USA:

February 3-5: **Introduction to LPS**

February 22-24: **Fundamentals of ERDAS IMAGINE I**

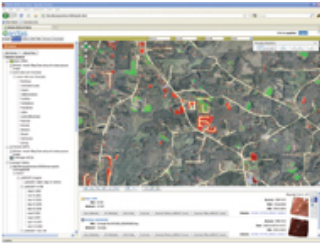
February 25-26: **Fundamentals of ERDAS IMAGINE II**

Tradeshows

year.

LPS eATE is an add-on module to LPS, an integrated suite of workflow-oriented photogrammetry software tools for production mapping, including the generation of digital terrain models, orthophoto production and 3D feature extraction. Automating precision measurement, maintaining accuracy and including flexible operations such as image mosaicking, LPS increases productivity while ensuring high accuracy. [Read More](#)

PRODUCT NEWS



Your Integrated Data Management, Delivery & Collaboration Solution

ERDAS APOLLO 2010 is equipped to fully understand, competently manage and rapidly serve large volumes of vector, raster and terrain data. ERDAS APOLLO implements an out-of-the box Service Oriented Architecture (SOA), that provides a publish, find and bind workflow for any data type. Integrating ERDAS Image Web Server and ERDAS TITAN, ERDAS APOLLO is now available in three tiers to cater to any organization's management, collaboration and delivery needs. [Read More](#)

14 January 2010
ERDAS Rocks World Tour
St. Louis, Missouri, USA

18 January 2010
ERDAS-India User Group Meeting
Gurgaon NCR, India

19-21 January 2010
Map India
Gurgaon NCR, India

26 January 2010
Deuxieme Journee Francaise de l'Imagerie Geospatiale
Paris, France

15 February 2010
USEUCOM
Heidelberg, Germany

Connect with ERDAS on



and



Join the LinkedIn ERDAS Users & Developers Group

or see the latest movies on



New on ERDAS TV:
2 new webisodes!

ERDAS in the News
Find the latest ERDAS news in the Online Media Room.

Click here for info on our Solutions

Click here for our latest Press Releases

Visit erdas.com

